

# FLOOR PLANS CAPACITY CHARTS

**THE WESTIN**  
BOSTON  
WATERFRONT



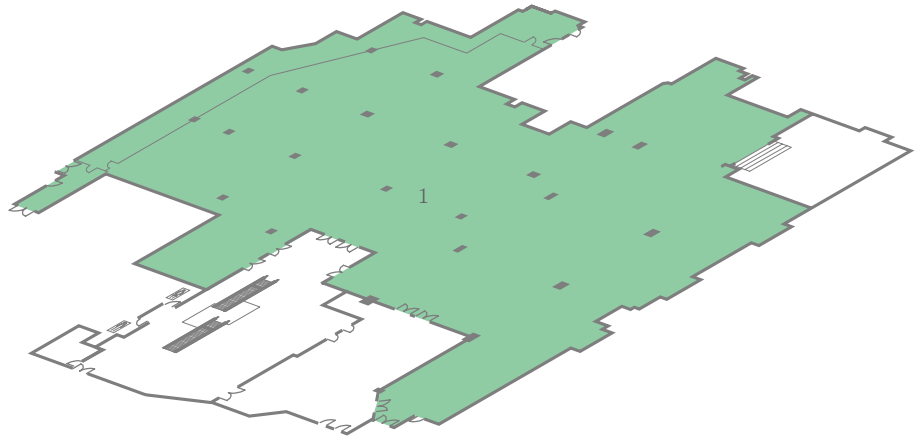
# MEETING SPACE OVERVIEW, PART ONE

425 Summer Street  
Boston, Massachusetts 02210  
T 857.243.6900  
E [waterfront.sales@westin.com](mailto:waterfront.sales@westin.com)  
[westinbostonwaterfront.com](http://westinbostonwaterfront.com)

**THE WESTIN**  
BOSTON  
WATERFRONT

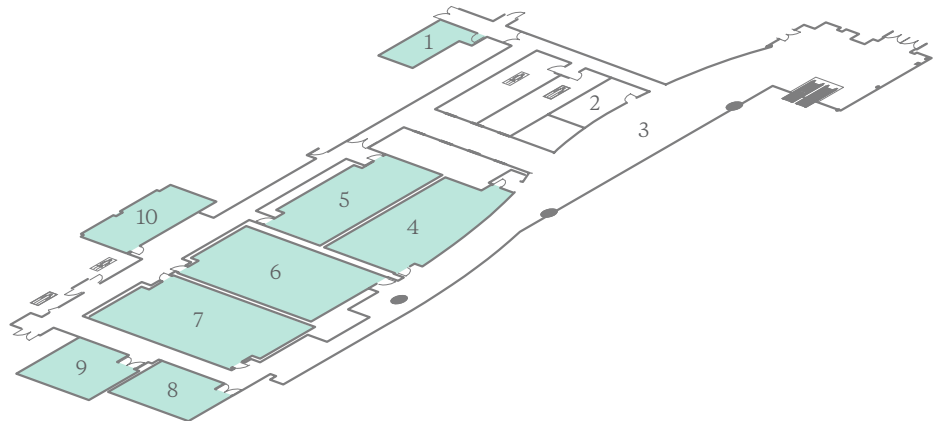
## HARBOR WING, CONCOURSE LEVEL

1. GALLERIA



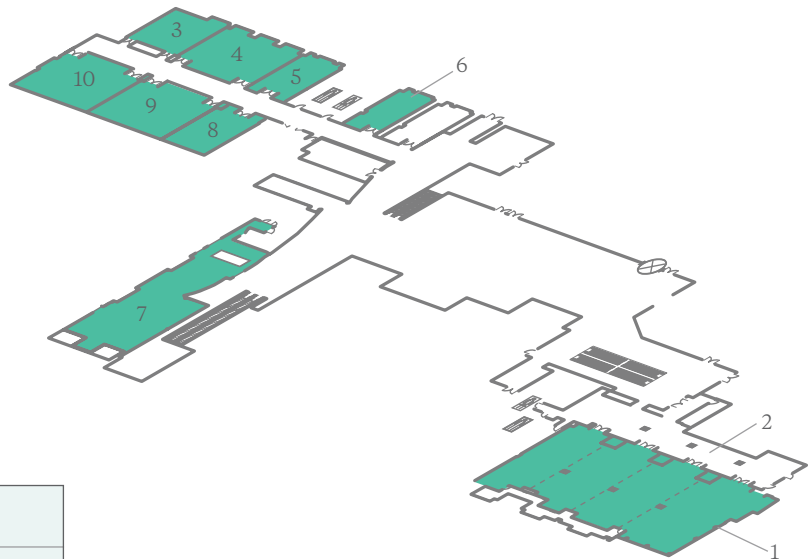
## MEZZANINE LEVEL

1. FROST
2. TANGENT
3. MEZZANINE PREFUNCTION
4. ALCOTT
5. ADAMS
6. DOUGLASS
7. FANEUIL
8. EXECUTIVE BOARDROOM
9. HALE
10. BULFINCH



## LOBBY LEVEL

1. MARINA BALLROOM
2. MARINA PREFUNCTION
3. HANCOCK
4. OTIS
5. PAINE
6. QUINCY
7. SAUCIETY
8. REVERE
9. STONE
10. WEBSTER



### ROOMS AT A GLANCE

TOTAL GUEST ROOMS	793
TOTAL MEETING ROOMS	37
LARGEST MEETING ROOM CAPACITY	1,800
LARGEST MEETING ROOM SIZE	1,780 m <sup>2</sup> / 19,160 ft <sup>2</sup>

Additional spaces for meetings and events, not displayed here, may also be available. Contact your hotel representative for more information.

This document contains approximate measurements and square footage that are for illustrative purposes only. We cannot guarantee the floor plan accuracy or completeness, therefore encourage you to review the space to make sure it is suitable for your event.

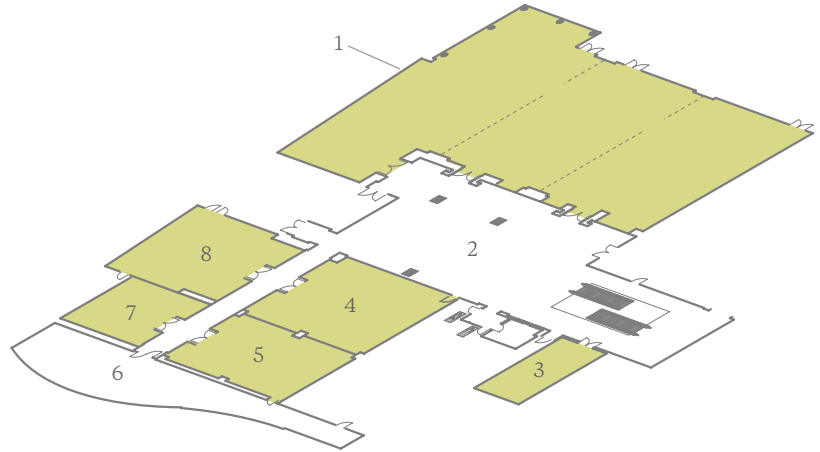
# MEETING SPACE OVERVIEW, PART TWO

425 Summer Street  
Boston, Massachusetts 02210  
T 857.243.6900  
E waterfront.sales@westin.com  
westinbostonwaterfront.com

**THE WESTIN**  
BOSTON  
WATERFRONT

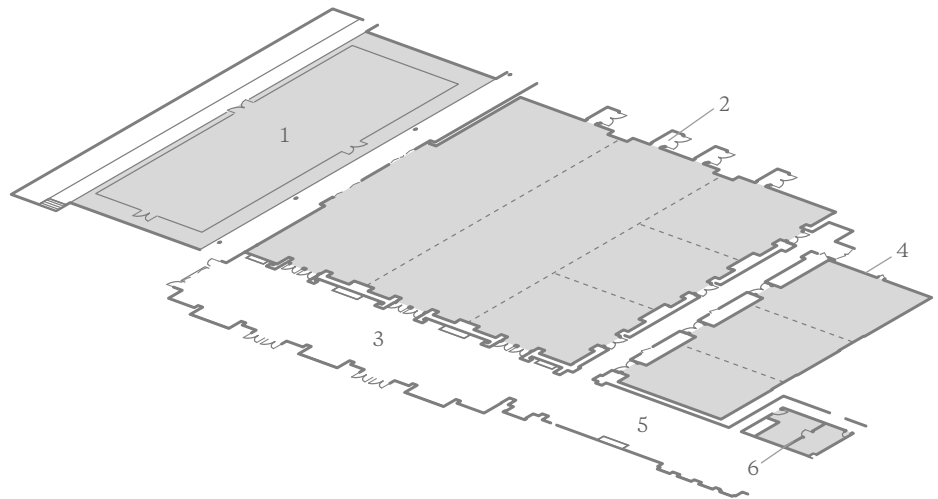
## HARBOR WING, CONFERENCE LEVEL

1. HARBOR BALLROOM
2. HARBOR PREFUNCTION
3. INDEPENDENCE BOARDROOM
4. BURROUGHS
5. CARLTON
6. HARBOR TERRACE
7. GRIFFIN
8. LEWIS



## CONCOURSE LEVEL

1. PAVILION
2. GRAND BALLROOM
3. GRAND BALLROOM FOYER
4. COMMONWEALTH BALLROOM
5. COMMONWEALTH FOYER
6. ELM



### ROOMS AT A GLANCE

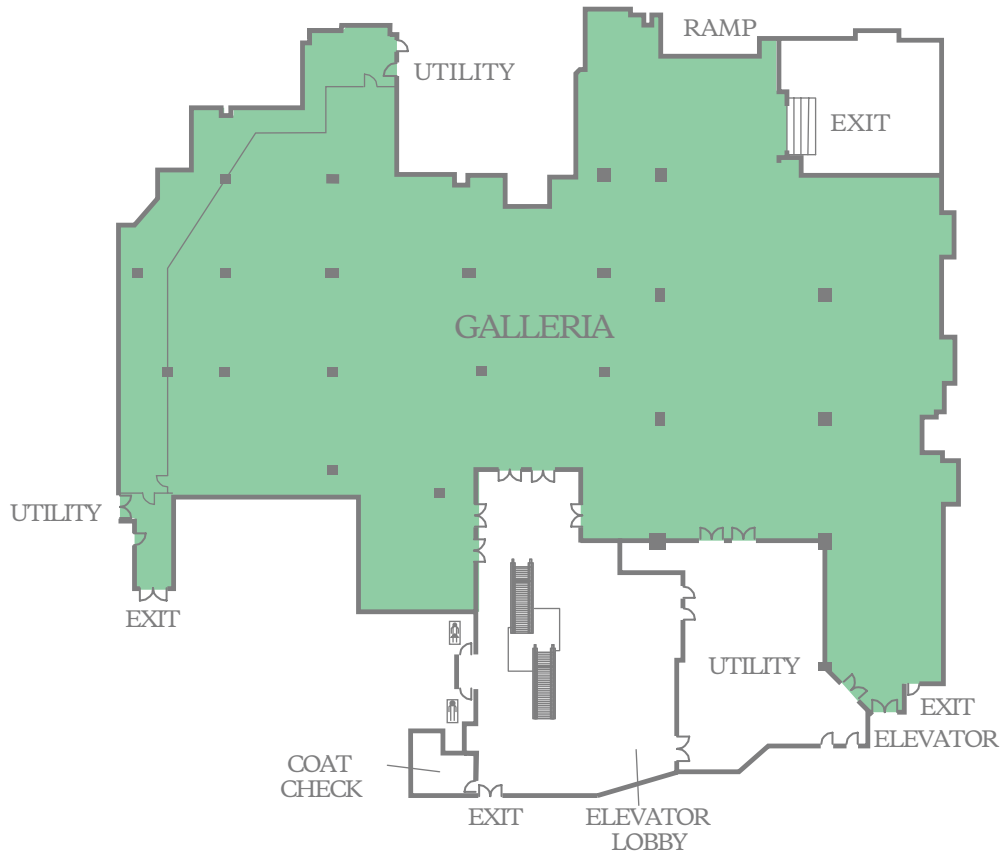
TOTAL GUEST ROOMS	793
TOTAL MEETING ROOMS	37
LARGEST MEETING ROOM CAPACITY	1,800
LARGEST MEETING ROOM SIZE	1,780 m <sup>2</sup> / 19,160 ft <sup>2</sup>

Additional spaces for meetings and events, not displayed here, may also be available. Contact your hotel representative for more information.

MEETING SPACE  
HARBOR WING,  
CONCOURSE LEVEL

425 Summer Street  
Boston, Massachusetts 02210  
T 857.243.6900  
E waterfront.sales@westin.com  
westinbostonwaterfront.com

**THE WESTIN**  
BOSTON  
WATERFRONT



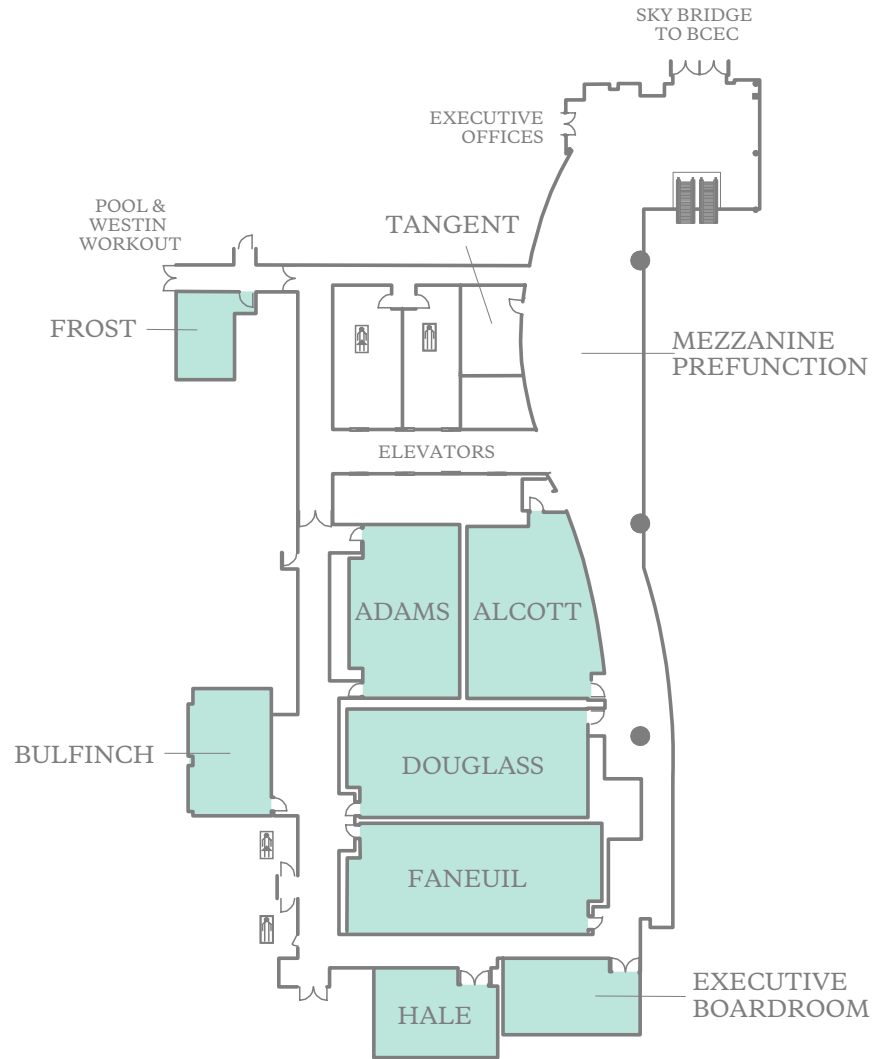
	DIMENSIONS	AREA (SQ. FT.)	MAX CEILING HEIGHT	THEATER	CLASSROOM	BANQUET	CONFERENCE	U-SHAPE	HOLLOW SQ.	RECEPTION
■ GALLERIA	187' X 121'	19,160	14.6'	—	—	1,050	—	—	—	2,000

This document contains approximate measurements and square footage that are for illustrative purposes only. We cannot guarantee the floor plan accuracy or completeness, therefore encourage you to review the space to make sure it is suitable for your event.

# MEETING SPACE MEZZANINE LEVEL

425 Summer Street  
Boston, Massachusetts 02210  
T 857.243.6900  
E [waterfront.sales@westin.com](mailto:waterfront.sales@westin.com)  
[westinbostonwaterfront.com](http://westinbostonwaterfront.com)

**THE WESTIN**  
BOSTON  
WATERFRONT



	DIMENSIONS	AREA (SQ. FT.)	MAX CEILING HEIGHT	THEATER	CLASSROOM	BANQUET	CONFERENCE	U-SHAPE	HOLLOW SQ.	RECEPTION
■ ADAMS	24' X 38'	883	11.5'	90	45	60	30	30	36	90
■ ALCOTT	29' X 41'	1,035	11.5'	100	45	70	26	30	36	115
■ BULFINCH	19' X 28'	508	11.5'	45	21	30	18	15	24	50
■ DOUGLASS	53' X 24'	1,254	11.5'	130	69	80	36	42	42	135
■ EXECUTIVE BOARDROOM	20' X 39'	722	12'	—	—	—	—	—	—	—
■ FANEUIL	56' X 24'	1,298	11.5'	160	72	100	42	42	48	140
■ FROST BOARDROOM	19' X 17'	265	8.5'	—	—	—	—	—	—	—
■ HALE	24' X 26'	564	11.5'	50	27	40	18	18	—	60

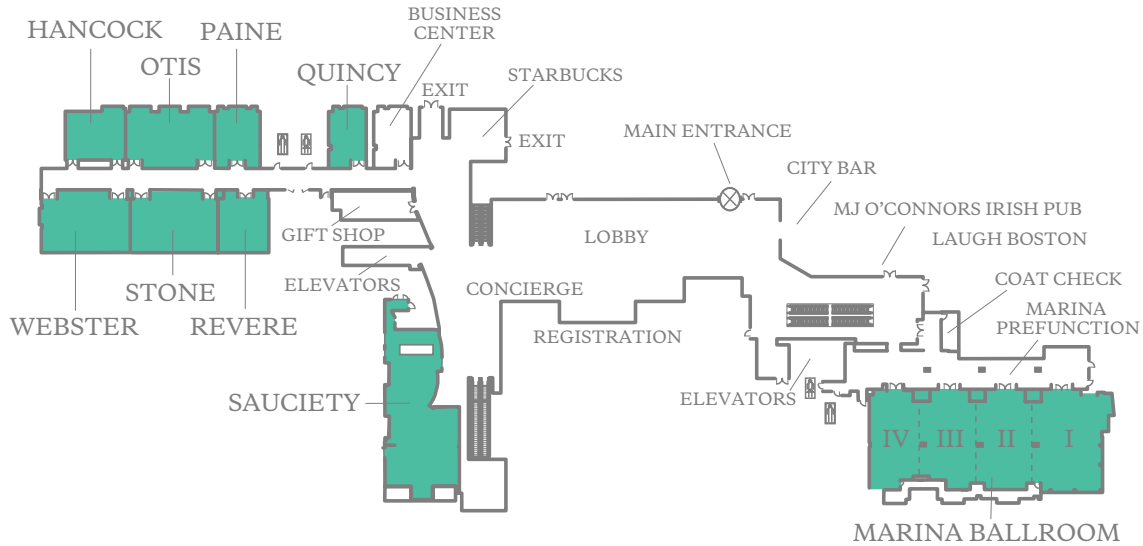
This document contains approximate measurements and square footage that are for illustrative purposes only. We cannot guarantee the floor plan accuracy or completeness, therefore encourage you to review the space to make sure it is suitable for your event.

# MEETING SPACE LOBBY LEVEL

425 Summer Street  
Boston, Massachusetts 02210  
T 857.243.6900  
E waterfront.sales@westin.com  
westinbostonwaterfront.com

# THE WESTIN

BOSTON  
WATERFRONT



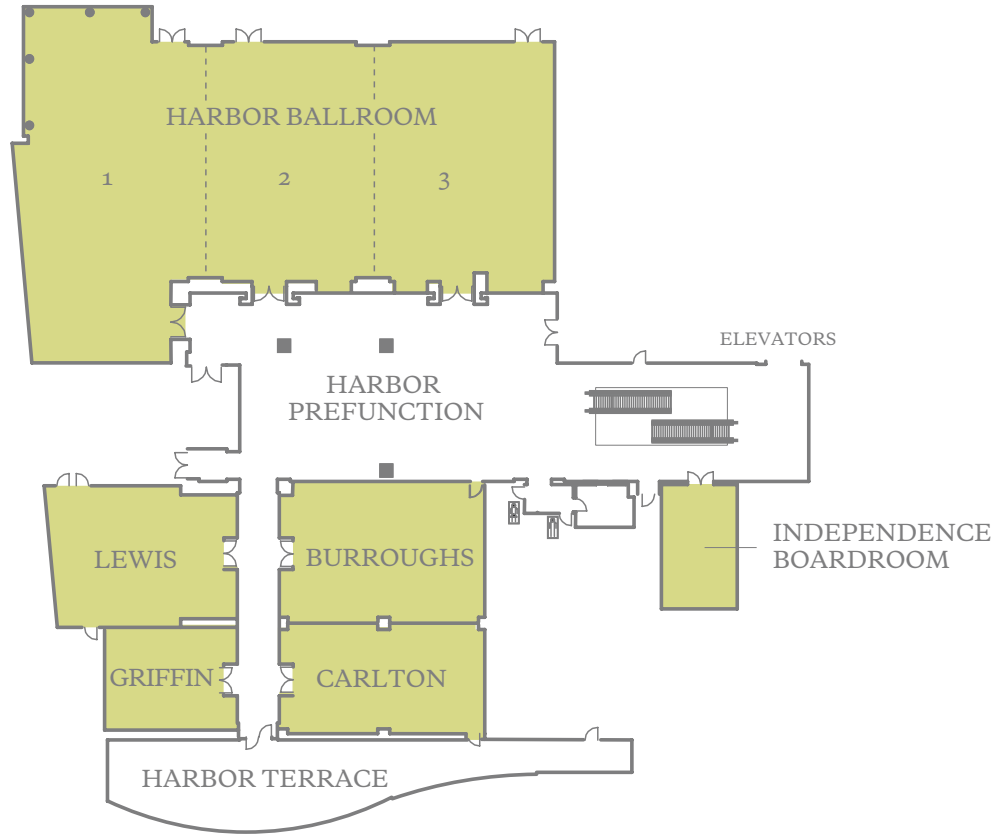
	DIMENSIONS	AREA (SQ. FT.)	MAX CEILING HEIGHT	THEATER	CLASSROOM	BANQUET	CONFERENCE	U-SHAPE	HOLLOW SQ.	RECEPTION
■ HANCOCK	29' X 32'	854	14'	80	36	60	20	24	30	95
■ MARINA BALLROOM & PREFUNCTION	102' X 155'	9,749	13.5'	—	—	—	—	—	—	—
■ MARINA BALLROOM	54' X 131'	6,170	13.5'	558	300	390	—	—	—	650
■ MARINA I	54' X 44'	2,031	13.5'	214	129	140	38	48	54	235
■ MARINA I - II	54' X 74'	3,483	13.5'	338	180	240	60	54	60	400
■ MARINA I - III	54' X 104'	4,888	13.5'	500	282	380	84	81	90	560
■ MARINA II	51' X 30'	1,452	13.5'	156	87	100	32	39	48	170
■ MARINA II - III	52' X 60'	2,859	13.5'	270	162	220	48	48	54	315
■ MARINA II - IV	52' X 87'	4,143	13.5'	377	192	220	72	72	78	450
■ MARINA III	52' X 30'	1,407	13.5'	156	84	100	32	39	48	168
■ MARINA III - IV	52' X 57'	2,564	13.5'	260	150	200	44	39	48	282
■ MARINA IV	52' X 27'	1,284	13.5'	148	72	80	32	39	48	152
■ OTIS	32' X 46'	1,377	14'	140	72	100	38	36	42	150
■ PAINE	32' X 24'	737	14'	80	33	50	18	21	24	80
■ QUINCY	32' X 20'	601	14'	60	24	40	18	21	24	65
■ REVERE	32' X 25'	757	14'	80	33	50	18	21	24	80
■ SAUCIETY	40' X 107'	2,898	13.1'	—	—	—	—	—	—	300
■ STONE	32' X 46'	1,416	12.5'	140	72	100	38	36	42	155
■ WEBSTER	32' X 47'	1,424	14'	140	78	110	38	36	42	155

This document contains approximate measurements and square footage that are for illustrative purposes only. We cannot guarantee the floor plan accuracy or completeness, therefore encourage you to review the space to make sure it is suitable for your event.

MEETING SPACE  
HARBOR WING  
CONFERENCE LEVEL

425 Summer Street  
Boston, Massachusetts 02210  
T 857.243.6900  
E waterfront.sales@westin.com  
westinbostonwaterfront.com

**THE WESTIN**  
BOSTON  
WATERFRONT



	DIMENSIONS	AREA (SQ. FT.)	MAX CEILING HEIGHT	THEATER	CLASSROOM	BANQUET	CONFERENCE	U-SHAPE	HOLLOW SQ.	RECEPTION
■ BURROUGHS	32' X 48'	1,492	11.5'	170	84	120	34	39	48	160
■ CARLTON	48' X 26'	1,181	11.5'	130	60	80	34	36	42	130
■ GRIFFIN	30' X 24'	679	11.5'	70	33	40	18	18	24	70
■ HARBOR BALLROOM	84' X 128'	7,987	19'	780	390	680	—	—	—	850
■ HARBOR I	84' X 46'	3,318	19'	360	159	280	—	63	72	360
■ HARBOR I - II	84' X 85'	5,543	19'	580	276	470	—	—	—	615
■ HARBOR II	58' X 39'	2,226	19'	270	130	180	—	48	60	240
■ HARBOR II - III	58' X 82'	4,666	19'	—	264	400	—	—	—	510
■ HARBOR III	58' X 43'	2,444	19'	300	150	200	—	50	66	270
■ HARBOR TERRACE	22' X 123'	1,802	—	—	—	—	—	—	—	189
■ INDEPENDENCE	29' X 18'	522	11.5'	—	—	—	14	—	—	—
■ LEWIS	45' X 33'	1,349	11.5'	140	63	90	28	33	36	145

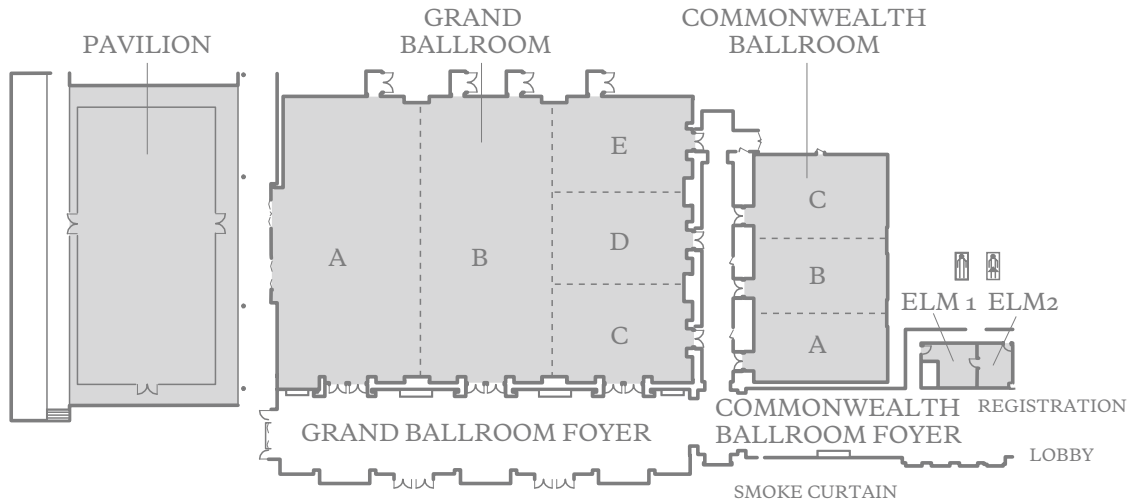
This document contains approximate measurements and square footage that are for illustrative purposes only. We cannot guarantee the floor plan accuracy or completeness, therefore encourage you to review the space to make sure it is suitable for your event.

# MEETING SPACE CONCOURSE LEVEL

425 Summer Street  
Boston, Massachusetts 02210  
T 857.243.6900  
E waterfront.sales@westin.com  
westinbostonwaterfront.com

# THE WESTIN

BOSTON  
WATERFRONT



	DIMENSIONS	AREA (SQ. FT.)	MAX CEILING HEIGHT	THEATER	CLASSROOM	BANQUET	CONFERENCE	U-SHAPE	HOLLOW SQ.	RECEPTION
■ COMMONWEALTH BALLROOM	52' X 82'	3,956	14'	480	210	280	—	75	90	420
■ COMMONWEALTH A	52' X 25'	1,212	14'	140	63	80	36	42	48	128
■ COMMONWEALTH A - B	52' X 51'	2,478	14'	265	120	200	—	48	66	260
■ COMMONWEALTH B	52' X 26'	1,267	14'	140	63	80	36	42	48	128
■ COMMONWEALTH B - C	52' X 57'	2,744	14'	300	120	200	42	51	72	200
■ COMMONWEALTH C	52' X 21'	1,477	14'	165	84	110	36	42	48	110
■ ELM 1 & 2	15' X 32'	425	9'	—	—	—	—	—	—	—
■ ELM 1	15' X 12'	182	9'	—	—	—	8	—	—	—
■ ELM 2	15' X 19'	242	9'	—	—	—	6	—	—	—
■ GRAND BALLROOM	112' X 151'	15,077	15'	1,400	860	1,080	—	—	—	1,500
■ GRAND A	112' X 52'	5,047	15'	552	270	320	—	—	—	540
■ GRAND A - B	112' X 101'	10,110	15'	1,100	570	720	—	—	—	1,000
■ GRAND B	112' X 49'	5,064	15'	552	270	320	—	—	—	540
■ GRAND B - E	112' X 99'	10,030	15'	1,100	570	720	—	—	—	1,000
■ GRAND C	35' X 50'	1,636	15'	180	84	130	36	45	54	165
■ GRAND C - D	69' X 50'	3,266	15'	360	168	250	—	—	—	330
■ GRAND C - E	112' X 50'	4,967	15'	460	270	320	—	—	—	522
■ GRAND D	34' X 50'	1,630	15'	180	84	120	36	45	54	165
■ GRAND D - E	77' X 50'	3,331	15'	360	168	250	—	—	—	330
■ GRAND E	43' X 50'	1,701	15'	180	84	130	36	45	54	165
■ PAVILION	49' X 99'	4,846	18.3'	550	342	320	—	—	—	600

This document contains approximate measurements and square footage that are for illustrative purposes only. We cannot guarantee the floor plan accuracy or completeness, therefore encourage you to review the space to make sure it is suitable for your event.





425 Summer Street  
Boston, Massachusetts 02210  
T 857.243.6900  
E [waterfront.sales@westin.com](mailto:waterfront.sales@westin.com)  
[westinbostonwaterfront.com](http://westinbostonwaterfront.com)

**THE WESTIN**  
BOSTON  
WATERFRONT